

\$6,200,000 - 65275 114a Range Road, Rural Lac La Biche County

MLS® #E4390214

\$6,200,000

0 Bedroom, 0.00 Bathroom,

Business with Property on 0.00 Acres

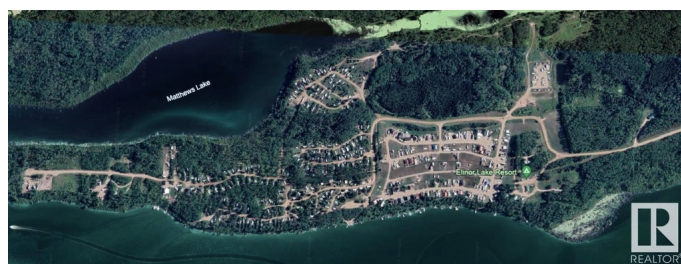
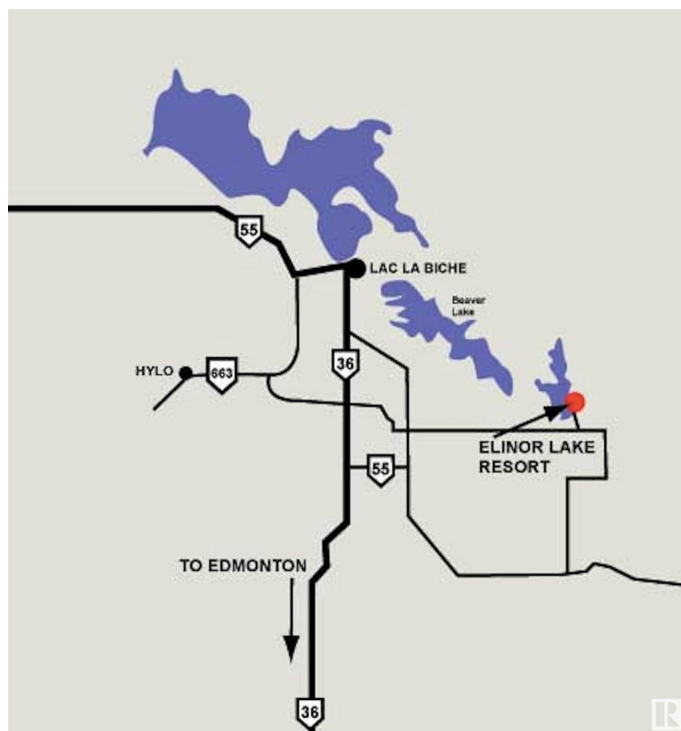
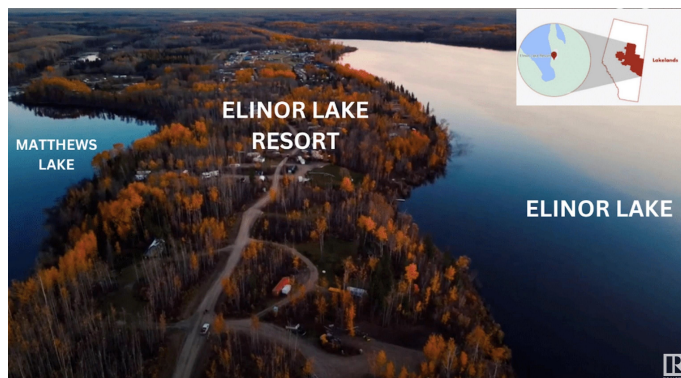
Elinor Lake Resort, Rural Lac La Biche County, AB

Elenor Lake Resort; located 30 minutes from Lac La Biche (one of the oldest, thriving towns in Western Canada) Total Development area including green space: 200 Acres +/- 600 Lots. Land Reserve: 30 Meters from Shoreline. Purchase; Leasing or Rent of Campsite Lots & Cabins. PHASE 1: 168 Lots â€“ 18 Included in the Sale. PHASE 2: 70 Undeveloped Lots. PHASE 3 thru 7: +/-368 Lots of Undeveloped Area. Â½ Mile of Lake Front; Boat launch; Convenience Store; Laundromat and Shower. Quad Wash; Water Station and Sanitation Station. Network of Trails; Ice fishing; Cross-country skiing; Snowmobiling. Easy access from Edmonton & Fort McMurray plus Lakeland Provincial Park.

Built in 2009

Essential Information

MLS® #	E4390214
Price	\$6,200,000
Bathrooms	0.00
Acres	0.00
Year Built	2009
Type	Business with Property
Status	Active



Community Information

Address	65275 114a Range Road
Area	Rural Lac La Biche County
Subdivision	Elinor Lake Resort
City	Rural Lac La Biche County
County	ALBERTA
Province	AB
Postal Code	T0A 2C0

Exterior

Exterior	See Remarks
Construction	See Remarks

Additional Information

Date Listed	May 30th, 2024
Days on Market	323
Zoning	Zone 60

DATA IS DEEMED RELIABLE BUT IS NOT GUARANTEED ACCURATE BY THE REALTORS® ASSOCIATION OF EDMONTON. COPYRIGHT 2025 BY THE REALTORS® ASSOCIATION OF EDMONTON. ALL RIGHTS RESERVED.Trademarks are owned or controlled by the Canadian Real Estate Association (CREA) and identify real estate professionals who are members of CREA (REALTOR®, REALTORS®) and/or the quality of services they provide (MLS®, Multiple Listing Service®)

Listing information last updated on April 18th, 2025 at 6:02pm MDT