

\$99,000 - 4609 52 Street, Entwistle

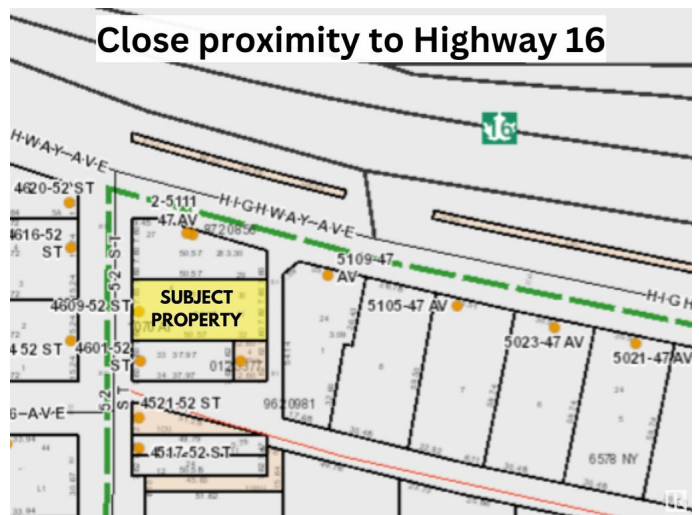
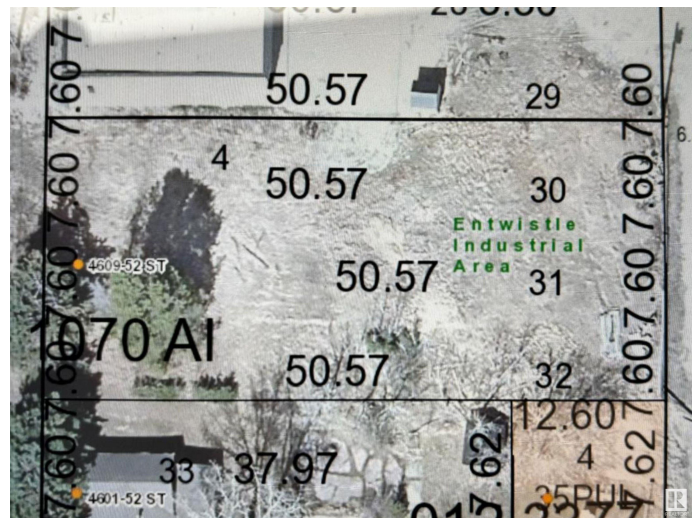
MLS® #E4393614

\$99,000

0 Bedroom, 0.00 Bathroom,
Land Commercial on 0.00 Acres

Entwistle, Entwistle, AB

Don't miss opportunity to purchase 3 lots very close to the Yellowhead (HWY 16) in Entwistle! Entwistle & Evansburg (population of just over 1000 residents) are communities located on HWY 16 with close proximity to the Pembina River, Entwistle is 43 miles from Stony Plain. Entwistle has benefited recently from new commercial developments including a Subway franchise on the lot directly north of the subject property, and a new aquatic facility. The subject property is comprised of 3 lots totalling 0.285 acres. The property is zoned Highway Commercial District (HC).



Essential Information

MLS® #	E4393614
Price	\$99,000
Bathrooms	0.00
Acres	0.00
Type	Land Commercial
Status	Active

Community Information

Address	4609 52 Street
Area	Entwistle
Subdivision	Entwistle
City	Entwistle
County	ALBERTA

Province AB
Postal Code T0E 0S0

Additional Information

Date Listed June 18th, 2024
Days on Market 297
Zoning Zone 70

DATA IS DEEMED RELIABLE BUT IS NOT GUARANTEED ACCURATE BY THE REALTORS® ASSOCIATION OF EDMONTON. COPYRIGHT 2025 BY THE REALTORS® ASSOCIATION OF EDMONTON. ALL RIGHTS RESERVED. Trademarks are owned or controlled by the Canadian Real Estate Association (CREA) and identify real estate professionals who are members of CREA (REALTOR®, REALTORS®) and/or the quality of services they provide (MLS®, Multiple Listing Service®)

Listing information last updated on April 11th, 2025 at 9:32pm MDT