

# \$668,000 - 10145/10155 155 Street, Edmonton

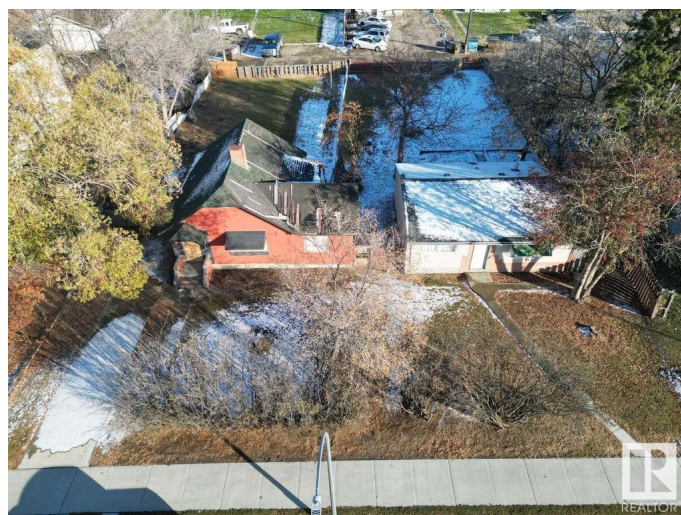
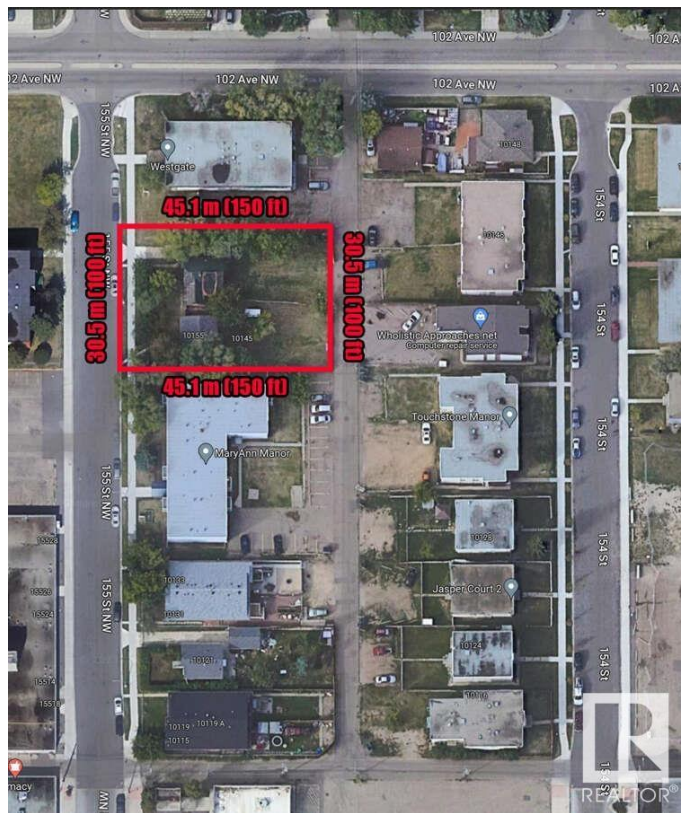
MLS® #E4400560

**\$668,000**

0 Bedroom, 0.00 Bathroom,  
Land Commercial on 0.00 Acres

Canora, Edmonton, AB

For more information, please click on "View Listing on Realtor Website". Introducing a prime investment opportunity! Two adjacent lots located at 10145 & 10155 155 St NW; offer a combined size of 30.5 m x 45.1 m (100 ft x 150 ft) in the RM h16 Medium Rise Apartment Zone (4 - 8 Storeys). This fully serviced property is ideal for infilling projects or constructing a medium rise apartment. Its strategic location provides easy access to the future Valley Line LRT, downtown, West Edmonton Mall, and various amenities. Demolition is buyer's responsibility. Prime investment opportunity: Two fully serviced adjacent lots in the RM h16 Medium Rise Apartment Zone (4 - 8 Storeys). Ideal for infilling projects or constructing a medium rise apartment. Convenient location near future Valley Line LRT, downtown, and West Edmonton Mall.



## Essential Information

MLS® #	E4400560
Price	\$668,000
Bathrooms	0.00
Acres	0.00
Type	Land Commercial
Status	Active

## Community Information

Address	10145/10155 155 Street
Area	Edmonton
Subdivision	Canora
City	Edmonton
County	ALBERTA
Province	AB
Postal Code	T5P 2L6

### **Additional Information**

Date Listed	August 4th, 2024
Days on Market	220
Zoning	Zone 21

DATA IS DEEMED RELIABLE BUT IS NOT GUARANTEED ACCURATE BY THE REALTORS® ASSOCIATION OF EDMONTON. COPYRIGHT 2025 BY THE REALTORS® ASSOCIATION OF EDMONTON. ALL RIGHTS RESERVED. Trademarks are owned or controlled by the Canadian Real Estate Association (CREA) and identify real estate professionals who are members of CREA (REALTOR®, REALTORS®) and/or the quality of services they provide (MLS®, Multiple Listing Service®)

Listing information last updated on March 12th, 2025 at 2:02pm MDT