

## **\$64,900 - 110 61029 Rge Rd 465, Rural Bonnyville M.D.**

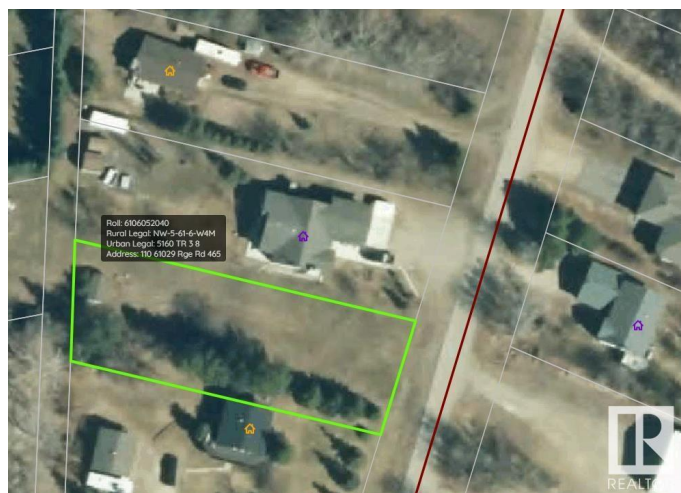
MLS® #E4407825

**\$64,900**

0 Bedroom, 0.00 Bathroom,  
Rural on 0.42 Acres

Model Development, Rural Bonnyville M.D.,  
AB

On your mark, get set, dig! Here is your opportunity to own an affordable lot within a short walk to the shores of Moose Lake and all the family fun that it promises. This half acre lot is the perfect place to build your cabin or dream home. Cleared and ready to go! Power and gas are at the road.



### **Essential Information**

MLS® #	E4407825
Price	\$64,900
Bathrooms	0.00
Acres	0.42
Type	Rural
Sub-Type	Vacant Lot/Land
Status	Active

### **Community Information**

Address	110 61029 Rge Rd 465
Area	Rural Bonnyville M.D.
Subdivision	Model Development
City	Rural Bonnyville M.D.
County	ALBERTA
Province	AB
Postal Code	T9N 2J1

### **Exterior**

Exterior Features    Beach Access, Boating, Flat Site, Fruit Trees/Shrubs, Lake Access  
Property, Lake View, Recreation Use

**Additional Information**

Date Listed                September 24th, 2024  
Days on Market        208  
Zoning                      Zone 65

DATA IS DEEMED RELIABLE BUT IS NOT GUARANTEED ACCURATE BY THE REALTORS® ASSOCIATION OF EDMONTON. COPYRIGHT 2025 BY THE REALTORS® ASSOCIATION OF EDMONTON. ALL RIGHTS RESERVED.Trademarks are owned or controlled by the Canadian Real Estate Association (CREA) and identify real estate professionals who are members of CREA (REALTOR®, REALTORS®) and/or the quality of services they provide (MLS®, Multiple Listing Service®)  
Listing information last updated on April 20th, 2025 at 7:32am MDT