

\$349,000 - 6120 50 Avenue, Drayton Valley

MLS® #E4407855

\$349,000

0 Bedroom, 0.00 Bathroom,
Land Commercial on 0.00 Acres

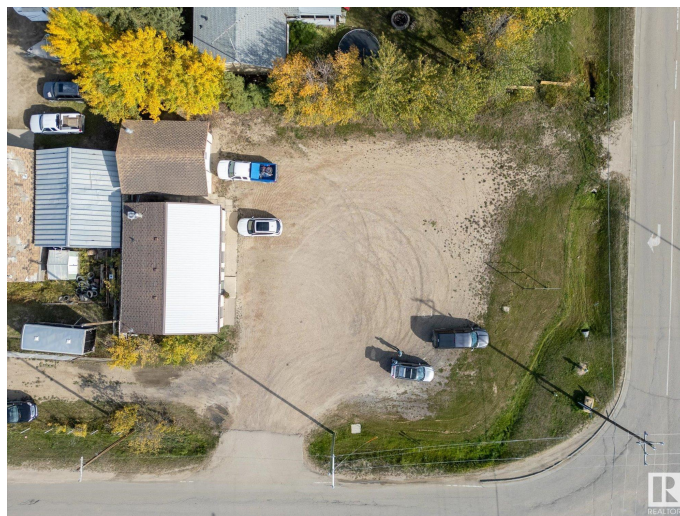
Drayton Valley, Drayton Valley, AB

Here is a HUGE (969 square meters)
commercial development lot in Drayton Valley.

This is one of three adjoining lots available as a commercial land assembly. Currently, this property has an oversized single detached garage plus a functional office building (approximately 1200 square feet) which is leased to great tenants. This property is being sold for land value only as part of a commercial land assembly package. This property is the high visibility corner lot siding 50th Avenue & 62 Street. Zoned as "C-Gen", or Commercial District, General offers a variety of redevelopment options, especially if paired with the 2 adjoining lots making a GIANT 4000+ square meter (just over 1 acre) corner lot. Ideally located for a commercial development being on 50th avenue, just off HWY 22, and a block away from Power Center BLVD. This property, especially when combined with the 2 adjoining lots, offers great exposure and huge potential for your commercial development.

Essential Information

| | |
|-----------|-----------|
| MLS® # | E4407855 |
| Price | \$349,000 |
| Bathrooms | 0.00 |
| Acres | 0.00 |



| | |
|--------|-----------------|
| Type | Land Commercial |
| Status | Active |

Community Information

| | |
|-------------|----------------|
| Address | 6120 50 Avenue |
| Area | Drayton Valley |
| Subdivision | Drayton Valley |
| City | Drayton Valley |
| County | ALBERTA |
| Province | AB |
| Postal Code | T7A 1J4 |

Additional Information

| | |
|----------------|----------------------|
| Date Listed | September 25th, 2024 |
| Days on Market | 204 |
| Zoning | Zone 90 |

DATA IS DEEMED RELIABLE BUT IS NOT GUARANTEED ACCURATE BY THE REALTORS® ASSOCIATION OF EDMONTON. COPYRIGHT 2025 BY THE REALTORS® ASSOCIATION OF EDMONTON. ALL RIGHTS RESERVED.Trademarks are owned or controlled by the Canadian Real Estate Association (CREA) and identify real estate professionals who are members of CREA (REALTOR®, REALTORS®) and/or the quality of services they provide (MLS®, Multiple Listing Service®)

Listing information last updated on April 17th, 2025 at 9:17am MDT