

Courtesy Of Zak B Mimouni Of Exp Realty

\$679,900 - 6923 Johnnie Caine Way, Edmonton

MLS® #E4411030

\$679,900

5 Bedroom, 2.50 Bathroom, 2,497 sqft
Single Family on 0.00 Acres

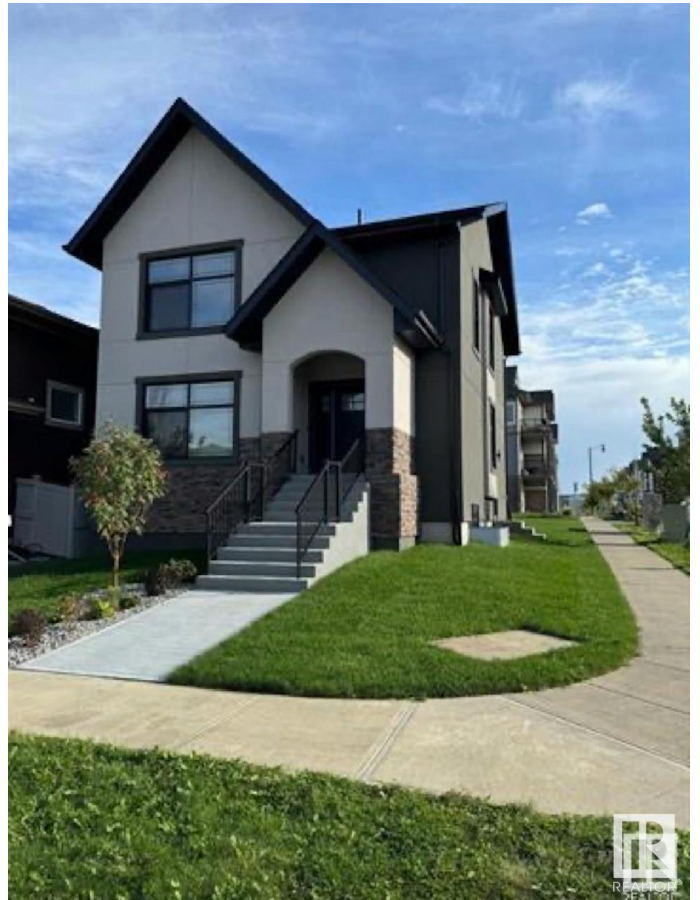
Griesbach, Edmonton, AB

An outstanding design. This brand new custom home is absolutely stunning! The attention to detail, & luxury designer finishing's are evident as soon as you step inside. Open concept, high end flooring, exquisite lighting, quartz counters, large chefs kitchen. The bright entry leads through the main level with modern cabinetry, island, sink & large pantry. The living room has an elegant linear fireplace, custom surround & large mudroom with custom cabinets. Main level also features a half bath and attached garage. The upper level is unique & showcases an incredible bonus room perfect for entertaining. 4 additional bedrooms plus a 5pc spa like ensuite. This home features plenty of natural lighting. An absolute must see family home. SEPARATE ENTRANCE to the basement can be turned into a legal suite. Stucco exterior on a corner lot with plenty of parking. Close to Griesbach school and parks. Landscaping, deck, fence all included and turn key ready to go. Make this your home today.

Built in 2023

Essential Information

MLS® #	E4411030
Price	\$679,900
Bedrooms	5



Bathrooms	2.50
Full Baths	2
Half Baths	1
Square Footage	2,497
Acres	0.00
Year Built	2023
Type	Single Family
Sub-Type	Detached Single Family
Style	2 Storey
Status	Active

Community Information

Address	6923 Johnnie Caine Way
Area	Edmonton
Subdivision	Griesbach
City	Edmonton
County	ALBERTA
Province	AB
Postal Code	T5E 6W4

Amenities

Amenities	See Remarks
Parking	Double Garage Attached

Interior

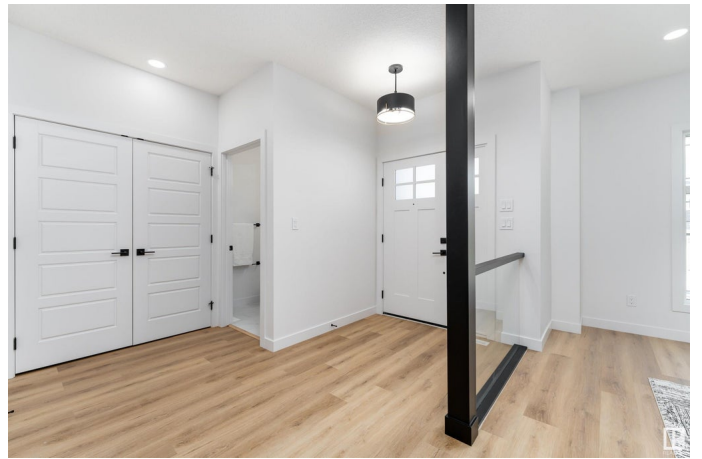
Interior Features	ensuite bathroom
Appliances	Hood Fan
Heating	Forced Air-1, Natural Gas
Stories	2
Has Basement	Yes
Basement	Full, Unfinished

Exterior

Exterior	Wood, Stone, Stucco
Exterior Features	Back Lane
Roof	Asphalt Shingles
Construction	Wood, Stone, Stucco
Foundation	Concrete Perimeter

Additional Information

Date Listed October 20th, 2024
Days on Market 143
Zoning Zone 27



DATA IS DEEMED RELIABLE BUT IS NOT GUARANTEED ACCURATE BY THE REALTORS® ASSOCIATION OF EDMONTON. COPYRIGHT 2025 BY THE REALTORS® ASSOCIATION OF EDMONTON. ALL RIGHTS RESERVED. Trademarks are owned or controlled by the Canadian Real Estate Association (CREA) and identify real estate professionals who are members of CREA (REALTOR®, REALTORS®) and/or the quality of services they provide (MLS®, Multiple Listing Service®)

Listing information last updated on March 12th, 2025 at 5:47pm MDT