

Courtesy Of John Rota Of Sweetly

\$675,000 - 24 Harley Way, Spruce Grove

MLS® #E4412236

\$675,000

4 Bedroom, 2.50 Bathroom, 2,283 sqft

Single Family on 0.00 Acres

Hilldowns, Spruce Grove, AB

Welcome to this stunning brand-new two-story home, nestled on a serene cul-de-sac in a welcoming, family-friendly community.

Designed with both comfort and style in mind, this home boasts a bright and open main floor featuring a modern chef's kitchen, spacious dining area, and a sunlit living room perfect for gatherings. An additional den/office space and a convenient 2-piece bathroom complete this versatile main level. Upstairs, you

will find three generously sized bedrooms, plus a luxurious primary suite with a spa-like 5-piece ensuite, as well as a 4-piece bathroom and a large, open-concept bonus room that creates an airy, connected feel. For added

convenience, this home also includes a triple attached garage, providing plenty of space for vehicles and storage. Ideal for families or those looking for a peaceful community with modern comforts, this home won't last

long! *Photos are the artist rendering for representation only*

long! *Photos are the artist rendering for representation only*

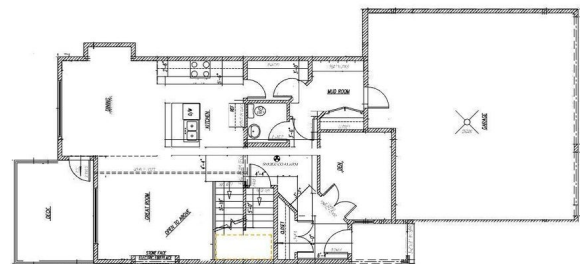
Built in 2024

Essential Information

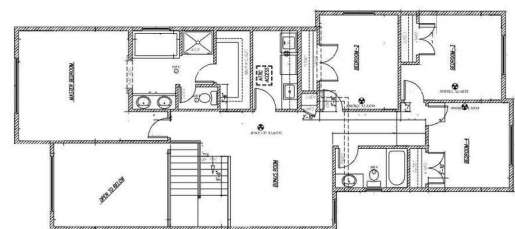
MLS® #	E4412236
Price	\$675,000
Bedrooms	4
Bathrooms	2.50



FRONT ELEVATION



MAIN FLOOR PLAN 1002 SQ FT
GARAGE 690 SQ.FT.



UPPER FLOOR PLAN 1281 SQ.FT.

Full Baths	2
Half Baths	1
Square Footage	2,283
Acres	0.00
Year Built	2024
Type	Single Family
Sub-Type	Detached Single Family
Style	2 Storey
Status	Active

Community Information

Address	24 Harley Way
Area	Spruce Grove
Subdivision	Hilldowns
City	Spruce Grove
County	ALBERTA
Province	AB
Postal Code	T7X 0X4

Amenities

Amenities	Detectors Smoke, No Animal Home, No Smoking Home
Parking	Triple Garage Attached

Interior

Interior Features	ensuite bathroom
Appliances	See Remarks
Heating	Forced Air-1, Natural Gas
Stories	2
Has Basement	Yes
Basement	Full, Unfinished

Exterior

Exterior	Wood, Stone, Vinyl
Exterior Features	Cul-De-Sac, Playground Nearby, Schools, Shopping Nearby
Roof	Asphalt Shingles
Construction	Wood, Stone, Vinyl
Foundation	Concrete Perimeter

Additional Information

Date Listed October 31st, 2024

Days on Market 162

Zoning Zone 91

DATA IS DEEMED RELIABLE BUT IS NOT GUARANTEED ACCURATE BY THE REALTORS® ASSOCIATION OF EDMONTON. COPYRIGHT 2025 BY THE REALTORS® ASSOCIATION OF EDMONTON. ALL RIGHTS RESERVED. Trademarks are owned or controlled by the Canadian Real Estate Association (CREA) and identify real estate professionals who are members of CREA (REALTOR®, REALTORS®) and/or the quality of services they provide (MLS®, Multiple Listing Service®)

Listing information last updated on April 11th, 2025 at 5:47pm MDT