

## \$459,900 - 61422 Rr 205, Rural Thorhild County

MLS® #E4413730

**\$459,900**

2 Bedroom, 1.00 Bathroom, 896 sqft

Rural on 160.00 Acres

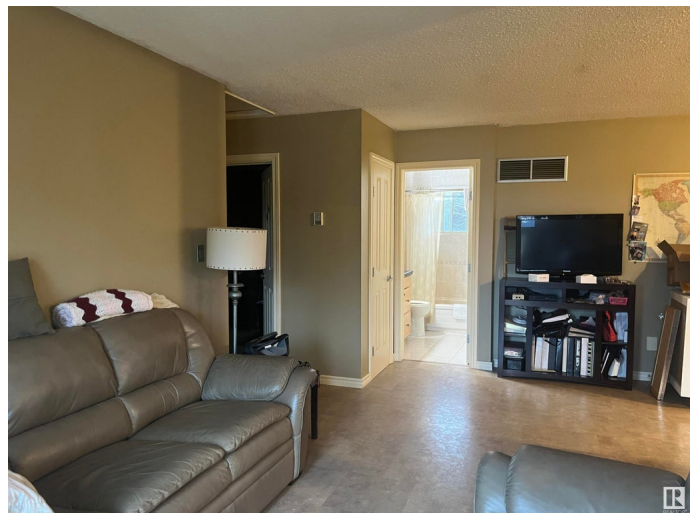
None, Rural Thorhild County, AB

Enjoy privacy on this 160 acres at the end of a dead end road just a few minutes south of Newbrook. This cute 896 sq ft 2 bedroom 1 bathroom home was built in 1983 with 2"x6" walls and has been well kept. Upgrades over the years include flooring, kitchen cabinets, windows, ss appliances (stove and dishwasher new this year) shingles and bathroom renovations. Open living/kitchen concept, bay window and garden doors to a large covered deck add to this great home. There is a 32'x24' detached garage with addition on the back for more storage. Beautiful setting amongst large mature trees. The pasture land is all fenced and has dugouts for water and has been rented out for cattle pasture the last few years. Perfect property for someone wanting a little privacy with lots of land for hunting or farming. Just about an hour to Edmonton.

Built in 1983

### Essential Information

MLS® #	E4413730
Price	\$459,900
Bedrooms	2
Bathrooms	1.00
Full Baths	1
Square Footage	896
Acres	160.00



Year Built	1983
Type	Rural
Sub-Type	Detached Single Family
Style	Bungalow
Status	Active

### **Community Information**

Address	61422 Rr 205
Area	Rural Thorhild County
Subdivision	None
City	Rural Thorhild County
County	ALBERTA
Province	AB
Postal Code	T0A 2P0

### **Amenities**

Features	Deck, Exterior Walls- 2"x6", Fire Pit
----------	---------------------------------------

### **Interior**

Heating	Forced Air-1, Propane
Stories	1
Has Basement	Yes
Basement	None, No Basement

### **Exterior**

Exterior	Wood
Exterior Features	Fenced, Fruit Trees/Shrubs, Landscaped, Private Setting, Subdividable Lot
Construction	Wood
Foundation	Piling

### **Additional Information**

Date Listed	November 14th, 2024
Days on Market	144
Zoning	Zone 60

DATA IS DEEMED RELIABLE BUT IS NOT GUARANTEED ACCURATE BY THE REALTORS® ASSOCIATION OF EDMONTON. COPYRIGHT 2025 BY THE REALTORS® ASSOCIATION OF EDMONTON. ALL RIGHTS RESERVED. Trademarks are owned or controlled by the Canadian Real Estate Association (CREA) and identify real estate professionals who are members of CREA (REALTOR®, REALTORS®) and/or the quality of services they provide (MLS®, Multiple Listing Service®)

Listing information last updated on April 7th, 2025 at 8:32am MDT