

# \$39,900 - 105 58532 Range Road 113, Rural St. Paul County

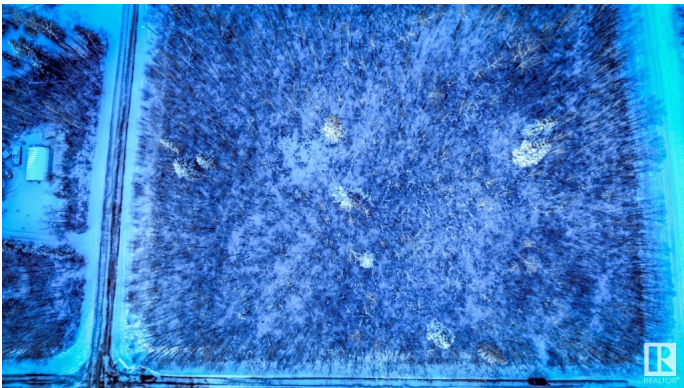
MLS® #E4414610

**\$39,900**

0 Bedroom, 0.00 Bathroom,  
Rural on 1.90 Acres

Lottie Lake Estate, Rural St. Paul County, AB

Discover Your Slice of Paradise at Lottie Lake!  
Nestled on 1.90 acres of serene, treed land, this property offers the perfect balance of privacy and natural beauty. Enjoy peaceful views of rolling hills across the field while being surrounded by the tranquility of nature. Located just 20 minutes from St. Paul and 2 hours east of Edmonton, this property is a rare find for those seeking a private escape without sacrificing convenience. With municipal water, power, and gas available at the property line, it's primed and ready for your dream home, cabin, RV or weekend getaway. Whether you're looking to build, invest, or simply enjoy a serene retreat, this is your opportunity to create something truly special. Don't miss this chance to own a piece of the quiet countryside at Lottie Lake—where relaxation meets possibility!



## Essential Information

MLS® #	E4414610
Price	\$39,900
Bathrooms	0.00
Acres	1.90
Type	Rural
Sub-Type	Vacant Lot/Land

Status                      Active

**Community Information**

Address                    105 58532 Range Road 113  
Area                        Rural St. Paul County  
Subdivision               Lottie Lake Estate  
City                        Rural St. Paul County  
County                     ALBERTA  
Province                  AB  
Postal Code               T0A 3A0

**Exterior**

Exterior Features    Backs Onto Park/Trees, Boating, Flat Site, Recreation Use, Treed Lot

**Additional Information**

Date Listed               November 25th, 2024  
Days on Market        146  
Zoning                    Zone 60

DATA IS DEEMED RELIABLE BUT IS NOT GUARANTEED ACCURATE BY THE REALTORS® ASSOCIATION OF EDMONTON. COPYRIGHT 2025 BY THE REALTORS® ASSOCIATION OF EDMONTON. ALL RIGHTS RESERVED.Trademarks are owned or controlled by the Canadian Real Estate Association (CREA) and identify real estate professionals who are members of CREA (REALTOR®, REALTORS®) and/or the quality of services they provide (MLS®, Multiple Listing Service®)  
Listing information last updated on April 20th, 2025 at 4:17pm MDT