

# \$699,998 - 47 Grassview Crescent, Spruce Grove

MLS® #E4415285

**\$699,998**

4 Bedroom, 3.00 Bathroom, 2,594 sqft

Single Family on 0.00 Acres

Tonewood, Spruce Grove, AB

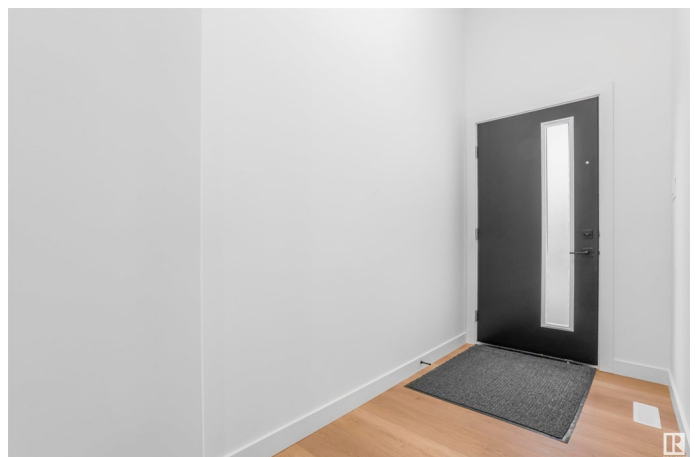
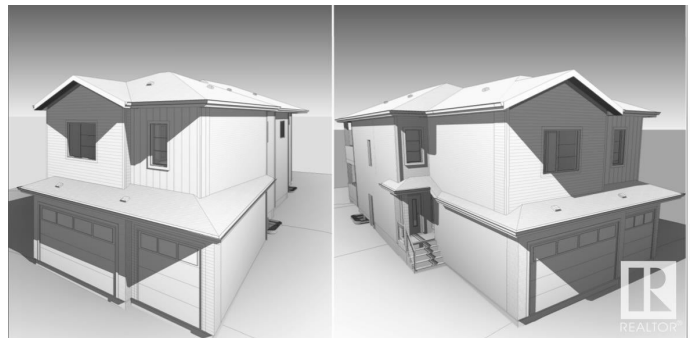
Nestled in the desirable Tonewood community of Spruce Grove, this stunning home offers a spacious triple-car garage and an expertly designed interior. The main floor includes a bedroom and full bathroom, perfect for guests or multigenerational living, while the open-to-below living area complete with a cozy fireplace, creates an airy and inviting atmosphere. The gourmet kitchen with ample counter space, and a pantry. Dining Room that leads to a deck, perfect for outdoor living. Upstairs, a bright bonus room opens to a private balcony, offering additional living space. The primary bedroom suite provides a luxurious retreat with an ensuite bathroom & walk-in closet. Two additional bedrooms share a common bath. A dedicated gym/exercise room adds convenience for fitness enthusiasts. For added flexibility, a separate entrance leads to the basement, offering potential for a future suite. With modern finishes and a flexible layout, this home offers both style and practicality in a family-friendly neighborhood.

Built in 2024

## Essential Information

MLS® # E4415285

Price \$699,998



Bedrooms	4
Bathrooms	3.00
Full Baths	3
Square Footage	2,594
Acres	0.00
Year Built	2024
Type	Single Family
Sub-Type	Detached Single Family
Style	2 Storey
Status	Active

### **Community Information**

Address	47 Grassview Crescent
Area	Spruce Grove
Subdivision	Tonewood
City	Spruce Grove
County	ALBERTA
Province	AB
Postal Code	T7X 3G1

### **Amenities**

Amenities	Ceiling 9 ft., No Animal Home, No Smoking Home
Parking	Triple Garage Attached

### **Interior**

Interior Features	ensuite bathroom
Appliances	None
Heating	Forced Air-1, Natural Gas
Stories	2
Has Basement	Yes
Basement	Full, Unfinished

### **Exterior**

Exterior	Wood, Vinyl
Exterior Features	Playground Nearby
Roof	Asphalt Shingles
Construction	Wood, Vinyl
Foundation	Concrete Perimeter

### **Additional Information**

Date Listed December 4th, 2024

Days on Market 135

Zoning Zone 91

DATA IS DEEMED RELIABLE BUT IS NOT GUARANTEED ACCURATE BY THE REALTORS® ASSOCIATION OF EDMONTON. COPYRIGHT 2025 BY THE REALTORS® ASSOCIATION OF EDMONTON. ALL RIGHTS RESERVED. Trademarks are owned or controlled by the Canadian Real Estate Association (CREA) and identify real estate professionals who are members of CREA (REALTOR®, REALTORS®) and/or the quality of services they provide (MLS®, Multiple Listing Service®)

Listing information last updated on April 18th, 2025 at 2:17pm MDT