

\$375,000 - 9148 23 Avenue, Edmonton

MLS® #E4417081

\$375,000

0 Bedroom, 0.00 Bathroom,
Office on 0.00 Acres

Parsons Industrial, Edmonton, AB

Approx 1,000 sq.ft. of office space FOR SALE in the highly visible Square on 23rd. 2nd floor space offers 4 private offices (3 with windows), reception area, board room (or 5th office - with a window), kitchen area, and large storage room. Building offers a mix of retail and professional services. Ample parking, and signage available. Building also features an elevator and is handicap accessible. This would make a great space for professionals (medical, finance, law, etc) Great accessibility to major roadways such as the Whitemud and Anthony Henday.

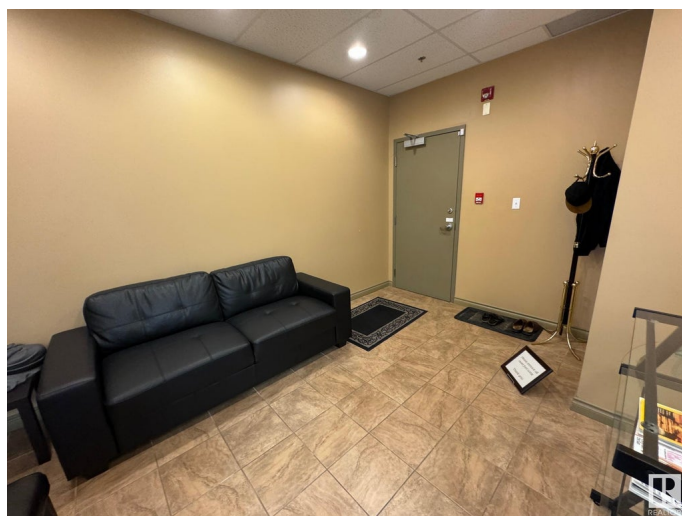
Built in 2008

Essential Information

MLS® #	E4417081
Price	\$375,000
Bathrooms	0.00
Acres	0.00
Year Built	2008
Type	Office
Status	Active

Community Information

Address	9148 23 Avenue
Area	Edmonton
Subdivision	Parsons Industrial



City	Edmonton
County	ALBERTA
Province	AB
Postal Code	T6N 1H9

Exterior

Exterior	Wood Frame
Construction	Wood Frame

Additional Information

Date Listed	January 3rd, 2025
Days on Market	90
Zoning	Zone 41

DATA IS DEEMED RELIABLE BUT IS NOT GUARANTEED ACCURATE BY THE REALTORS® ASSOCIATION OF EDMONTON. COPYRIGHT 2025 BY THE REALTORS® ASSOCIATION OF EDMONTON. ALL RIGHTS RESERVED. Trademarks are owned or controlled by the Canadian Real Estate Association (CREA) and identify real estate professionals who are members of CREA (REALTOR®, REALTORS®) and/or the quality of services they provide (MLS®, Multiple Listing Service®)

Listing information last updated on April 3rd, 2025 at 1:02am MDT