

\$139,900 - 5320 Pyrogy Drive, Glendon

MLS® #E4419201

\$139,900

3 Bedroom, 1.00 Bathroom, 1,080 sqft
Single Family on 0.00 Acres

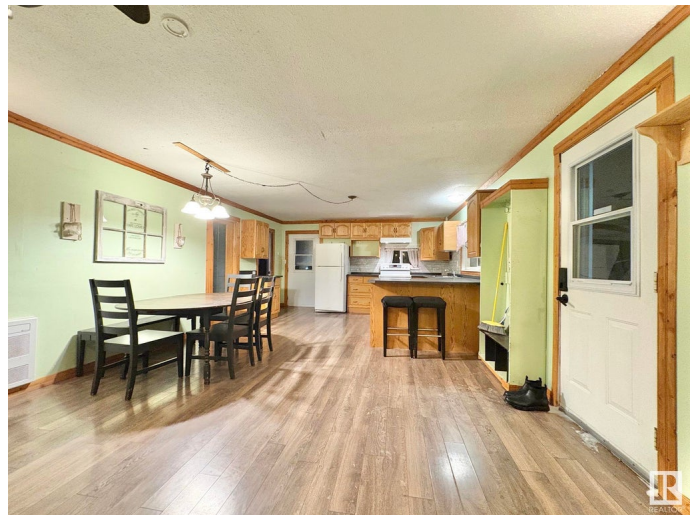
Glendon, Glendon, AB

Cute and Cozy! This delightful 3 bedroom bungalow is an ideal starter home! The open concept floor plan features a warm and welcoming living room with wood stove. Convenient kitchen offers plenty of cabinets, eat at counter, all appliances included and large dining area. Enjoy main floor laundry room with additional storage. Full updated bathroom has wood accents and custom organizers. 1/2 acre lot is partially fenced and landscaped with side deck, garden plot, fire pit area, plenty of parking and oversized shed. Close to school, parks, and main street amenities. Located in the Village of Glendon, central to Bonnyville and St. Paul! Home ownership made easy!

Built in 1970

Essential Information

MLS® #	E4419201
Price	\$139,900
Bedrooms	3
Bathrooms	1.00
Full Baths	1
Square Footage	1,080
Acres	0.00
Year Built	1970
Type	Single Family



Sub-Type	Detached Single Family
Style	Bungalow
Status	Active

Community Information

Address	5320 Pyrogy Drive
Area	Glendon
Subdivision	Glendon
City	Glendon
County	ALBERTA
Province	AB
Postal Code	T0A 1P0

Amenities

Amenities	Off Street Parking, Deck
Parking	No Garage

Interior

Appliances	Dishwasher-Built-In, Dryer, Oven-Microwave, Refrigerator, Storage Shed, Stove-Electric, Washer, Window Coverings
Heating	Space Heater, Wood Stove, Electric
Fireplace	Yes
Fireplaces	Woodstove
Stories	1
Has Basement	Yes
Basement	None, No Basement

Exterior

Exterior	Wood, Vinyl
Exterior Features	Landscaped, Playground Nearby, Shopping Nearby, Partially Fenced
Roof	Metal
Construction	Wood, Vinyl
Foundation	Block

Additional Information

Date Listed	January 21st, 2025
Days on Market	88
Zoning	Zone 60

DATA IS DEEMED RELIABLE BUT IS NOT GUARANTEED ACCURATE BY THE REALTORS® ASSOCIATION OF

EDMONTON. COPYRIGHT 2025 BY THE REALTORS® ASSOCIATION OF EDMONTON. ALL RIGHTS RESERVED.Trademarks are owned or controlled by the Canadian Real Estate Association (CREA) and identify real estate professionals who are members of CREA (REALTOR®, REALTORS®) and/or the quality of services they provide (MLS®, Multiple Listing Service®)

Listing information last updated on April 19th, 2025 at 5:02pm MDT