

\$160,000 - Hwy 28 Rr 114, Rural St. Paul County

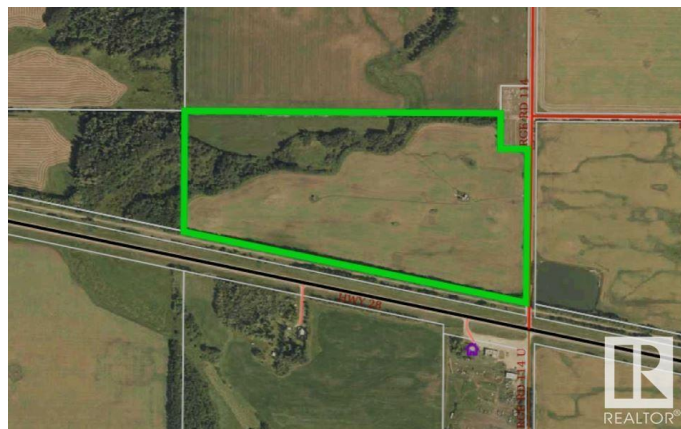
MLS® #E4420252

\$160,000

0 Bedroom, 0.00 Bathroom,
Rural on 71.17 Acres

None, Rural St. Paul County, AB

Nestled just west of Ashmont on Highway 28, this expansive 70+ acre green pasture offers versatile opportunities for cattle, horses, recreation, or conversion to cropland. Or, build your dream acreage with ample space for a residence, garden, workshop, and maybe a few animal companions. Located just 20 minutes from St. Paul and two hours from Edmonton, the potential is boundless with numerous possibilities for development or personal use.



Essential Information

MLS® #	E4420252
Price	\$160,000
Bathrooms	0.00
Acres	71.17
Type	Rural
Sub-Type	Vacant Lot/Land
Status	Active

Community Information

Address	Hwy 28 Rr 114
Area	Rural St. Paul County
Subdivision	None
City	Rural St. Paul County
County	ALBERTA
Province	AB

Postal Code T0A 0C0

Exterior

Exterior Features Flat Site, Recreation Use

Additional Information

Date Listed February 4th, 2025

Days on Market 75

Zoning Zone 60

DATA IS DEEMED RELIABLE BUT IS NOT GUARANTEED ACCURATE BY THE REALTORS® ASSOCIATION OF EDMONTON. COPYRIGHT 2025 BY THE REALTORS® ASSOCIATION OF EDMONTON. ALL RIGHTS RESERVED.Trademarks are owned or controlled by the Canadian Real Estate Association (CREA) and identify real estate professionals who are members of CREA (REALTOR®, REALTORS®) and/or the quality of services they provide (MLS®, Multiple Listing Service®)

Listing information last updated on April 20th, 2025 at 2:02am MDT