

# \$519,900 - 2833 Koshal Crescent, Edmonton

MLS® #E4421804

**\$519,900**

3 Bedroom, 2.50 Bathroom, 1,738 sqft  
Single Family on 0.00 Acres

Keswick Area, Edmonton, AB

This immaculate Half Duplex home is located on a quiet street in the beautiful community of Keswick. Offering 1737 sq ft of above-grade living space, featuring 9ft ceilings, 3 bedrooms, 2.5 bathrooms, and a double attached garage.

A spacious entryway leads to the bright living room. Open concept floor plan gives direct access to the kitchen featuring a massive walk-through pantry, quartz countertops, and stainless steel appliances, formal dining room leads to the east-facing backyard and deck. A 2 pc bath completes the main floor. Upstairs has 3 generous sized bedrooms, a bonus room, and a 4 pc shared bath. The master bedroom boasts a 5 pc ensuite bath and a walk-in closet. Unfinished basement with tons of potential. Close to schools, shopping, and all amenities, quick access to Henday.

Built in 2017

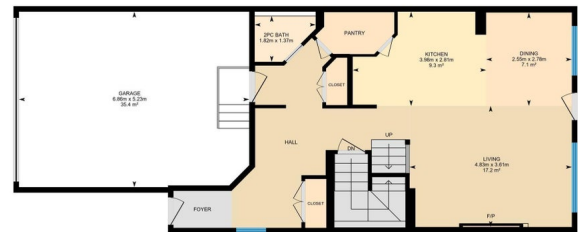
## Essential Information

MLS® #	E4421804
Price	\$519,900
Bedrooms	3
Bathrooms	2.50
Full Baths	2
Half Baths	1
Square Footage	1,738
Acres	0.00



2833 Koshal Cres SW, Edmonton, AB

Main Floor Exterior Area 108.260 m<sup>2</sup>  
Interior Area 63.211 m<sup>2</sup>  
Excluded Area 38.36 m<sup>2</sup>



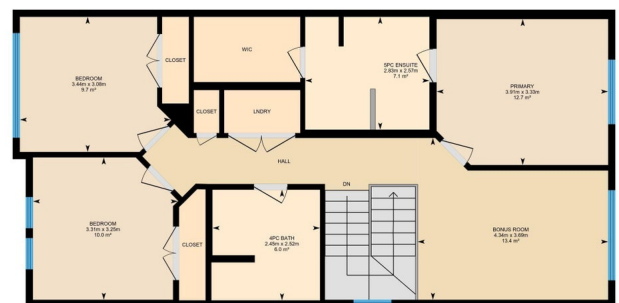
0 2 4 m

PREPARED: 2025/02/15

White regions are excluded from total floor area in iGUIDE floor plans. All room dimensions and floor areas must be considered approximate and are subject to independent verification.

2833 Koshal Cres SW, Edmonton, AB

2nd Floor Exterior Area 92.07 m<sup>2</sup>  
Interior Area 85.40 m<sup>2</sup>



0 1 2 m

PREPARED: 2025/02/15

White regions are excluded from total floor area in iGUIDE floor plans. All room dimensions and floor areas must be considered approximate and are subject to independent verification.

Year Built	2017
Type	Single Family
Sub-Type	Half Duplex
Style	2 Storey
Status	Active

### **Community Information**

Address	2833 Koshal Crescent
Area	Edmonton
Subdivision	Keswick Area
City	Edmonton
County	ALBERTA
Province	AB
Postal Code	T6W 3J7

### **Amenities**

Amenities	Air Conditioner, Ceiling 9 ft., Deck, Detectors Smoke, Natural Gas BBQ Hookup
Parking	Double Garage Attached

### **Interior**

Interior Features	ensuite bathroom
Appliances	Air Conditioning-Central, Dishwasher-Built-In, Dryer, Garage Control, Garage Opener, Microwave Hood Fan, Refrigerator, Stove-Electric, Washer, Window Coverings
Heating	Forced Air-1, Natural Gas
Stories	2
Has Basement	Yes
Basement	Full, Unfinished

### **Exterior**

Exterior	Wood, Stone, Vinyl
Exterior Features	Fenced, Flat Site, Golf Nearby, Landscaped, Playground Nearby, Schools, Shopping Nearby
Roof	Asphalt Shingles
Construction	Wood, Stone, Vinyl
Foundation	Concrete Perimeter

### **Additional Information**

Date Listed	February 15th, 2025
-------------	---------------------

Days on Market 27

Zoning Zone 56

DATA IS DEEMED RELIABLE BUT IS NOT GUARANTEED ACCURATE BY THE REALTORS® ASSOCIATION OF EDMONTON. COPYRIGHT 2025 BY THE REALTORS® ASSOCIATION OF EDMONTON. ALL RIGHTS RESERVED. Trademarks are owned or controlled by the Canadian Real Estate Association (CREA) and identify real estate professionals who are members of CREA (REALTOR®, REALTORS®) and/or the quality of services they provide (MLS®, Multiple Listing Service®)

Listing information last updated on March 14th, 2025 at 10:03am MDT