

\$157,500 - 4622 55 Avenue, Wetaskiwin

MLS® #E4422576

\$157,500

0 Bedroom, 0.00 Bathroom,
Single Family on 0.00 Acres

Recline, Wetaskiwin, AB

130' x 60' vacant lot in Wetaskiwin! Can build a single family home OR up to a 4plex with 4 legal basement suites. Preliminary plans for a 6plex available. Comes with topographic survey.



Essential Information

| | |
|-----------|-----------------|
| MLS® # | E4422576 |
| Price | \$157,500 |
| Bathrooms | 0.00 |
| Acres | 0.00 |
| Type | Single Family |
| Sub-Type | Vacant Lot/Land |
| Status | Active |

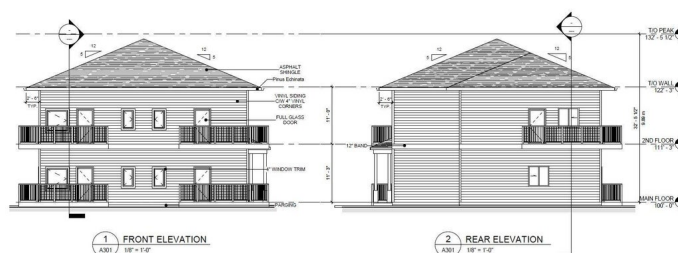
Community Information

| | |
|-------------|----------------|
| Address | 4622 55 Avenue |
| Area | Wetaskiwin |
| Subdivision | Recline |
| City | Wetaskiwin |
| County | ALBERTA |
| Province | AB |
| Postal Code | T9A 1A2 |

Exterior

Exterior Features See Remarks

Additional Information



Date Listed February 22nd, 2025

Days on Market 57

Zoning Zone 80

DATA IS DEEMED RELIABLE BUT IS NOT GUARANTEED ACCURATE BY THE REALTORS® ASSOCIATION OF EDMONTON. COPYRIGHT 2025 BY THE REALTORS® ASSOCIATION OF EDMONTON. ALL RIGHTS RESERVED. Trademarks are owned or controlled by the Canadian Real Estate Association (CREA) and identify real estate professionals who are members of CREA (REALTOR®, REALTORS®) and/or the quality of services they provide (MLS®, Multiple Listing Service®)

Listing information last updated on April 20th, 2025 at 9:17am MDT