

\$149,000 - 5216 49 Street, Waskatenau

MLS® #E4426077

\$149,000

3 Bedroom, 1.50 Bathroom, 1,248 sqft

Single Family on 0.00 Acres

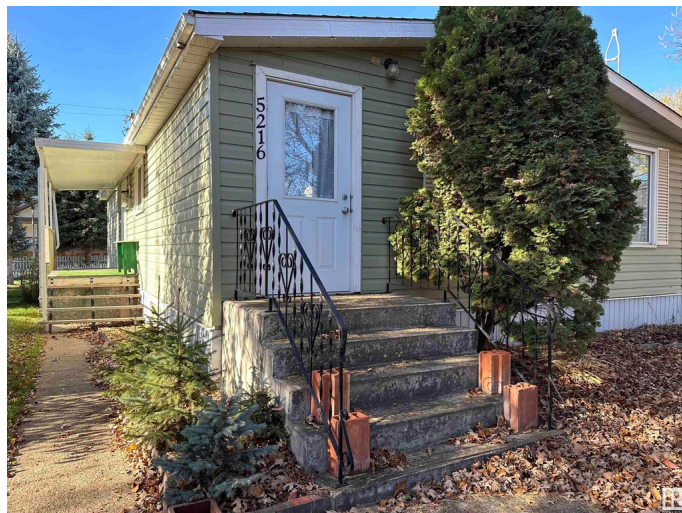
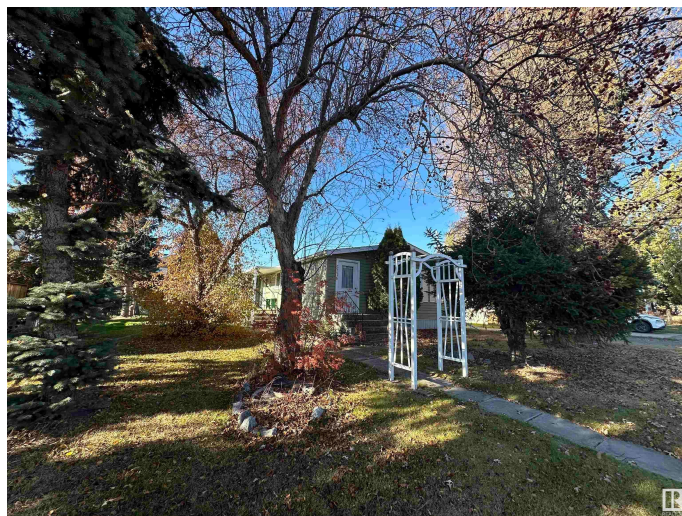
Waskatenau, Waskatenau, AB

Embrace your own place in quaint community, love the easier pace. Appreciate this 3 bed 2 bath home, double detached garage, storage shed, landscaped 117ft x 80ft lot, variety of forage, mature trees, lawn open for play or grow your own garden. Front drive access to Garage 30 ft x 20 ft, has power, overhead door, concrete parking pad+ long driveway for extra parking. Home front entry leads to generous living room open to Dining area - this space can seat a crowd. Adjacent kitchen with ample storage, counters, appliances, place for table to enjoy daily activities. As well as hall Closet, roomy bedrooms #2 + #3, main Bath 4 piece, Primary bed with 2 piece ensuite for your privacy. Family+ friends use covered side entry into mudroom with laundry, storage cabinets+ closets to keep items in control. Easy HWY access for daily commute, utilize: Creek walking path, Iron Horse Rec Trail, Sports + Community facilities for community means something here.

Built in 1977

Essential Information

MLS® #	E4426077
Price	\$149,000
Bedrooms	3
Bathrooms	1.50



Full Baths	1
Half Baths	1
Square Footage	1,248
Acres	0.00
Year Built	1977
Type	Single Family
Sub-Type	Detached Single Family
Style	Bungalow
Status	Active

Community Information

Address	5216 49 Street
Area	Waskatenau
Subdivision	Waskatenau
City	Waskatenau
County	ALBERTA
Province	AB
Postal Code	T0A 3P0

Amenities

Amenities	See Remarks
Parking Spaces	4
Parking	Double Garage Detached, Front Drive Access, Insulated, Parking Pad Cement/Paved

Interior

Interior Features	ensuite bathroom
Appliances	Dryer, Garage Control, Garage Opener, Hood Fan, Refrigerator, Storage Shed, Stove-Electric, Washer
Heating	Forced Air-1, Natural Gas
Stories	1
Has Basement	Yes
Basement	None, No Basement

Exterior

Exterior	Modular, Vinyl
Exterior Features	Landscaped, Level Land, Treed Lot
Lot Description	117 ft x 80 ft
Roof	Asphalt Shingles

Construction	Modular, Vinyl
Foundation	Block, Piling

Additional Information

Date Listed	March 17th, 2025
Days on Market	35
Zoning	Zone 60

DATA IS DEEMED RELIABLE BUT IS NOT GUARANTEED ACCURATE BY THE REALTORS® ASSOCIATION OF EDMONTON. COPYRIGHT 2025 BY THE REALTORS® ASSOCIATION OF EDMONTON. ALL RIGHTS RESERVED.Trademarks are owned or controlled by the Canadian Real Estate Association (CREA) and identify real estate professionals who are members of CREA (REALTOR®, REALTORS®) and/or the quality of services they provide (MLS®, Multiple Listing Service®)

Listing information last updated on April 21st, 2025 at 4:47am MDT