

\$95,000 - 1434 Wildrye Crescent, Cold Lake

MLS® #E4426968

\$95,000

0 Bedroom, 0.00 Bathroom,
Single Family on 0.00 Acres

Creekside Estates (Cold Lake), Cold Lake, AB

Seize the opportunity to build in the desirable Creekside Estates, a centrally located subdivision in Cold Lake North with quick access to Highway 55. This serviced vacant lot is ready for your vision—don't miss the chance to create your perfect family home in a fantastic neighborhood! 3 Lots for sale - convenient for builders.

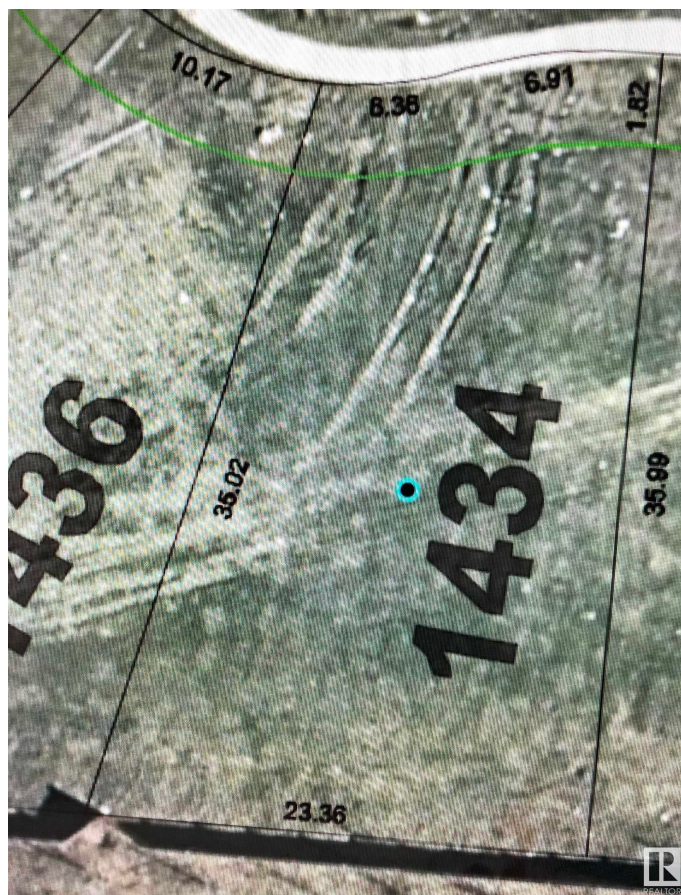
Essential Information

MLS® #	E4426968
Price	\$95,000
Bathrooms	0.00
Acres	0.00
Type	Single Family
Sub-Type	Vacant Lot/Land
Status	Active

Community Information

Address	1434 Wildrye Crescent
Area	Cold Lake
Subdivision	Creekside Estates (Cold Lake)
City	Cold Lake
County	ALBERTA
Province	AB
Postal Code	T9M 0K6

Exterior



Exterior Features Playground Nearby

Additional Information

Date Listed March 21st, 2025
Days on Market 30
Zoning Zone 60

DATA IS DEEMED RELIABLE BUT IS NOT GUARANTEED ACCURATE BY THE REALTORS® ASSOCIATION OF EDMONTON. COPYRIGHT 2025 BY THE REALTORS® ASSOCIATION OF EDMONTON. ALL RIGHTS RESERVED.Trademarks are owned or controlled by the Canadian Real Estate Association (CREA) and identify real estate professionals who are members of CREA (REALTOR®, REALTORS®) and/or the quality of services they provide (MLS®, Multiple Listing Service®)
Listing information last updated on April 20th, 2025 at 3:32am MDT