

\$588,000 - 21915 80 Avenue, Edmonton

MLS® #E4427275

\$588,000

3 Bedroom, 2.50 Bathroom, 1,862 sqft

Single Family on 0.00 Acres

Rosenthal (Edmonton), Edmonton, AB

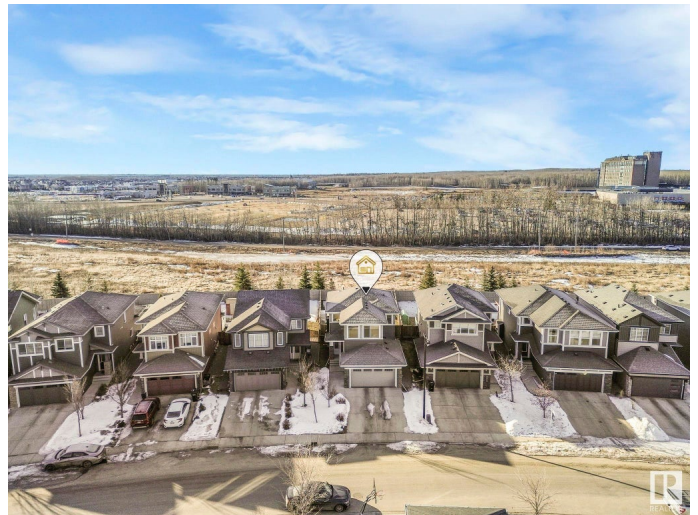
Amazing value in this immaculate & extremely clean 2 story custom-built home in West Edmonton's family friendly Rosenthal neighborhood. From the moment you enter you will notice the high soaring ceilings in the foyer with an abundance amount of light flowing through & lovely neutral color tones. The main floor has a nice cozy layout with a beautiful & functional kitchen featuring a large quartz island, ss appliances with gas stove + ample counter and cabinets space. Upstairs you will find a spacious bonus room, 3 bedrooms and full bath. The Primary bedroom has a walk-through closet + ensuite with separate soaker tub. All flooring has been upgraded with limited carpet only on the stairs. The south facing backyard is perfect and features a 2-tier deck and fruit trees. This home has no other houses backing onto it adding a nice layer of privacy & is close to all types of amenities, West Edmonton Mall & easy access to the Anthony Henday freeway and Whitemud Dr. All appliances and window coverings included.

Built in 2014

Essential Information

MLS® # E4427275

Price \$588,000



Bedrooms	3
Bathrooms	2.50
Full Baths	2
Half Baths	1
Square Footage	1,862
Acres	0.00
Year Built	2014
Type	Single Family
Sub-Type	Detached Single Family
Style	2 Storey
Status	Active

Community Information

Address	21915 80 Avenue
Area	Edmonton
Subdivision	Rosenthal (Edmonton)
City	Edmonton
County	ALBERTA
Province	AB
Postal Code	T5T 4S2

Amenities

Amenities	Deck, No Smoking Home
Parking Spaces	4
Parking	Double Garage Attached

Interior

Interior Features	ensuite bathroom
Appliances	Dishwasher-Built-In, Refrigerator, Stove-Gas
Heating	Forced Air-1, Natural Gas
Fireplace	Yes
Fireplaces	Glass Door, Mantel
Stories	2
Has Basement	Yes
Basement	Full, Unfinished

Exterior

Exterior	Wood, Stone, Vinyl
Exterior Features	Fenced, Golf Nearby, Landscaped, Playground Nearby, Public

	Transportation, Schools, Shopping Nearby, See Remarks
Roof	Asphalt Shingles
Construction	Wood, Stone, Vinyl
Foundation	Concrete Perimeter

Additional Information

Date Listed	March 24th, 2025
Days on Market	28
Zoning	Zone 58
HOA Fees	115.5
HOA Fees Freq.	Annually

DATA IS DEEMED RELIABLE BUT IS NOT GUARANTEED ACCURATE BY THE REALTORS® ASSOCIATION OF EDMONTON. COPYRIGHT 2025 BY THE REALTORS® ASSOCIATION OF EDMONTON. ALL RIGHTS RESERVED. Trademarks are owned or controlled by the Canadian Real Estate Association (CREA) and identify real estate professionals who are members of CREA (REALTOR®, REALTORS®) and/or the quality of services they provide (MLS®, Multiple Listing Service®)

Listing information last updated on April 21st, 2025 at 12:02am MDT