

\$499,702 - Rr 220 Twp Rd 530, Rural Strathcona County

MLS® #E4429814

\$499,702

0 Bedroom, 0.00 Bathroom,
Rural on 12.01 Acres

None, Rural Strathcona County, AB

CLOSE PROXIMITY TO ARDROSSAN AND
SHERWOOD PARK!...BEAUTIFUL ROLLING
LAND, TREED, PRIVATE SETTING...GREAT
BUILDING SITE...APPROACHES PAID FOR,
PAID TO LOT LINE...GAS AND POWER
ADJACENT TO PROPERTY...VERY
PRIVATE!

Built in 2025

Essential Information

MLS® #	E4429814
Price	\$499,702
Bathrooms	0.00
Acres	12.01
Year Built	2025
Type	Rural
Sub-Type	Vacant Lot/Land
Status	Active

Community Information

Address	Rr 220 Twp Rd 530
Area	Rural Strathcona County
Subdivision	None
City	Rural Strathcona County
County	ALBERTA
Province	AB
Postal Code	T8A 6M8

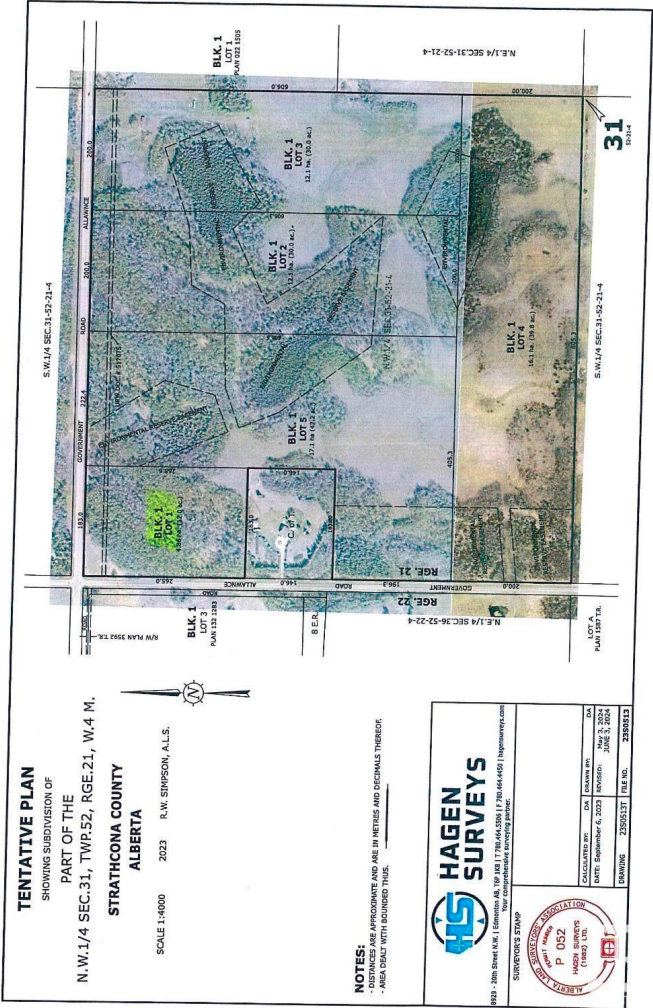


Exterior

Exterior Features See Remarks

Additional Information

Date Listed April 8th, 2025
Days on Market 12
Zoning Zone 80



DATA IS DEEMED RELIABLE BUT IS NOT GUARANTEED ACCURATE BY THE REALTORS® ASSOCIATION OF EDMONTON. COPYRIGHT 2025 BY THE REALTORS® ASSOCIATION OF EDMONTON. ALL RIGHTS RESERVED. Trademarks are owned or controlled by the Canadian Real Estate Association (CREA) and identify real estate professionals who are members of CREA (REALTOR®/REALTORS®) and/or the quality of services they provide (MLS®/Multiple Listing Service®). Listing information last updated on April 20th, 2025 at 4:32pm MDT.

