

## \$300,000 - 65 10 Woodcrest Lane, Fort Saskatchewan

MLS® #E4430161

**\$300,000**

3 Bedroom, 2.50 Bathroom, 1,331 sqft

Condo / Townhouse on 0.00 Acres

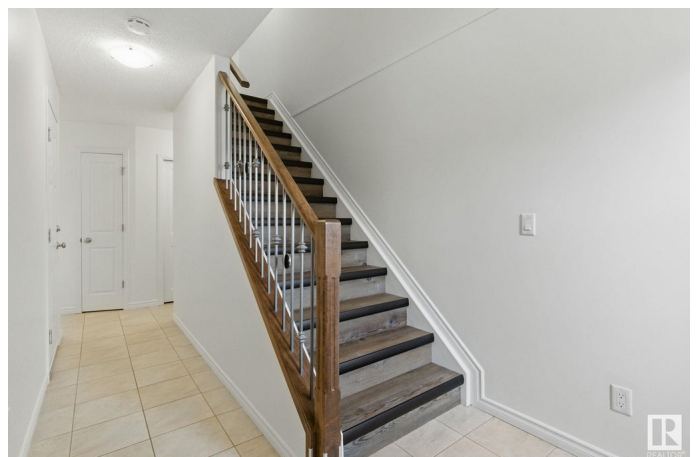
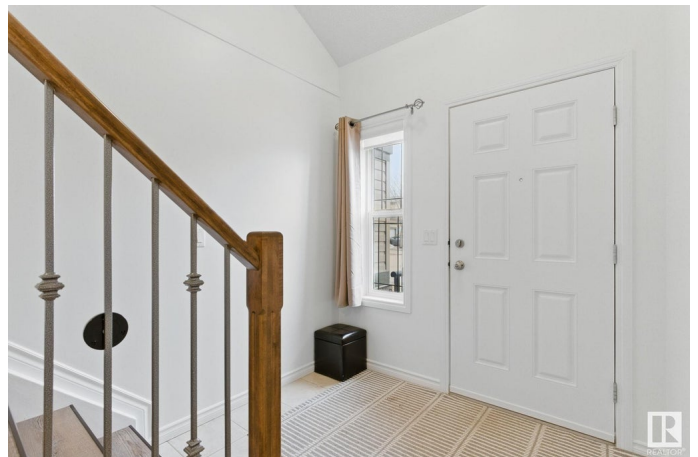
Westpark\_FSAS, Fort Saskatchewan, AB

Step into this beautiful 3 bedroom, 2.5 bathroom townhouse in Fort Saskatchewan! This home offers over 1,300 sq ft of comfortable living space, The living room, kitchen and dining room are the perfect place to relax or entertain guests. There are beautiful views of the park and trees you back onto plus a cozy deck for a morning coffee or an evening bbq. The living room and upstairs feature updated vinyl plank flooring and your kitchen has stainless steel appliances. The primary bedroom features a vaulted ceiling and private 3-piece ensuite. Unwind by the gas fireplace in the living room and enjoy the warm, inviting atmosphere it creates. A single attached garage adds convenience and extra storage. Whether you're starting a new chapter or looking to invest, this townhouse is a fantastic place to call home.

Built in 2010

### Essential Information

MLS® #	E4430161
Price	\$300,000
Bedrooms	3
Bathrooms	2.50
Full Baths	2
Half Baths	1
Square Footage	1,331



Acres	0.00
Year Built	2010
Type	Condo / Townhouse
Sub-Type	Townhouse
Style	2 Storey
Status	Active

### Community Information

Address	65 10 Woodcrest Lane
Area	Fort Saskatchewan
Subdivision	Westpark_FSAS
City	Fort Saskatchewan
County	ALBERTA
Province	AB
Postal Code	T8L 0C7

### Amenities

Amenities	Air Conditioner, Deck, Detectors Smoke, Hot Water Natural Gas
Parking	Single Garage Attached

### Interior

Interior Features	ensuite bathroom
Appliances	Air Conditioning-Central, Dishwasher-Built-In, Dryer, Microwave Hood Fan, Refrigerator, Stove-Electric, Washer, Window Coverings
Heating	Forced Air-1, Natural Gas
Fireplace	Yes
Fireplaces	Insert
Stories	2
Has Basement	Yes
Basement	Full, Unfinished

### Exterior

Exterior	Wood, Stone, Vinyl
Exterior Features	Backs Onto Park/Trees, Cul-De-Sac, Golf Nearby, Landscaped, Park/Reserve, Playground Nearby, Schools, Shopping Nearby
Roof	Asphalt Shingles
Construction	Wood, Stone, Vinyl
Foundation	Concrete Perimeter

### Additional Information

Date Listed	April 10th, 2025
Days on Market	10
Zoning	Zone 62
Condo Fee	\$285

DATA IS DEEMED RELIABLE BUT IS NOT GUARANTEED ACCURATE BY THE REALTORS® ASSOCIATION OF EDMONTON. COPYRIGHT 2025 BY THE REALTORS® ASSOCIATION OF EDMONTON. ALL RIGHTS RESERVED. Trademarks are owned or controlled by the Canadian Real Estate Association (CREA) and identify real estate professionals who are members of CREA (REALTOR®, REALTORS®) and/or the quality of services they provide (MLS®, Multiple Listing Service®)

Listing information last updated on April 20th, 2025 at 4:02pm MDT