

\$309,900 - 8810 120 Avenue, Edmonton

MLS® #E4430301

\$309,900

5 Bedroom, 3.00 Bathroom, 1,250 sqft

Single Family on 0.00 Acres

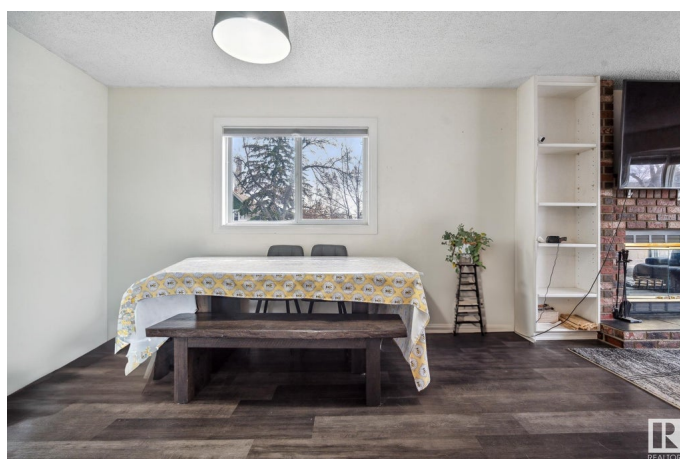
Eastwood, Edmonton, AB

Spacious and affordable 5 bedroom, 3 bathroom half-duplex in Eastwood! The main level offers a functional kitchen with ample cabinetry and counter space. Just off the kitchen, the living and dining area welcomes you with a brick fireplace—a perfect centerpiece for cozy evenings! You'll appreciate the upgraded vinyl plank flooring for a fresh, modern look! The primary bedroom features a 3-piece ensuite and patio doors leading to your balcony—ideal for your morning coffee or to unwind. Two additional bedrooms and a 4-piece bathroom complete the main level. The fully finished basement is sure to impress with a large second kitchen, additional living space, two more bedrooms, and an updated 4-piece bathroom. Located less than 10 minutes from NAIT and Kingsway Mall, with easy access to the Yellowhead!

Built in 1988

Essential Information

MLS® #	E4430301
Price	\$309,900
Bedrooms	5
Bathrooms	3.00
Full Baths	3
Square Footage	1,250
Acres	0.00



Year Built	1988
Type	Single Family
Sub-Type	Half Duplex
Style	Bi-Level
Status	Active

Community Information

Address	8810 120 Avenue
Area	Edmonton
Subdivision	Eastwood
City	Edmonton
County	ALBERTA
Province	AB
Postal Code	T5B 0Y4

Amenities

Amenities	On Street Parking, Parking-Extra
Parking	Single Garage Attached

Interior

Interior Features	ensuite bathroom
Appliances	Dryer, Hood Fan, Oven-Microwave, Washer, Window Coverings, Refrigerators-Two, Stoves-Two, Dishwasher-Two
Heating	Forced Air-1, Natural Gas
Fireplace	Yes
Fireplaces	Brick Facing
Stories	2
Has Basement	Yes
Basement	Full, Finished

Exterior

Exterior	Wood, Brick, Stucco
Exterior Features	Corner Lot, Schools, Shopping Nearby
Roof	Asphalt Shingles
Construction	Wood, Brick, Stucco
Foundation	Concrete Perimeter

Additional Information

Date Listed	April 11th, 2025
-------------	------------------

Days on Market 9

Zoning Zone 05

DATA IS DEEMED RELIABLE BUT IS NOT GUARANTEED ACCURATE BY THE REALTORS® ASSOCIATION OF EDMONTON. COPYRIGHT 2025 BY THE REALTORS® ASSOCIATION OF EDMONTON. ALL RIGHTS RESERVED. Trademarks are owned or controlled by the Canadian Real Estate Association (CREA) and identify real estate professionals who are members of CREA (REALTOR®, REALTORS®) and/or the quality of services they provide (MLS®, Multiple Listing Service®)

Listing information last updated on April 20th, 2025 at 9:02am MDT